



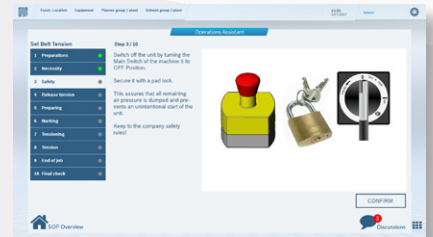
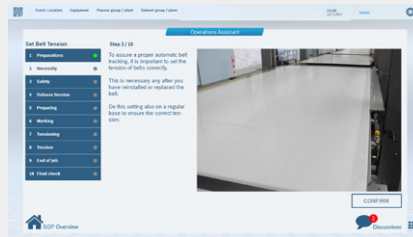
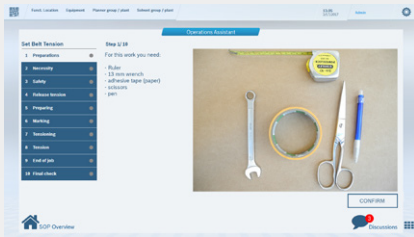
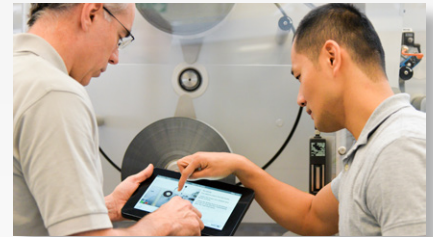
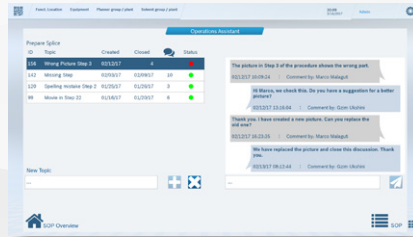
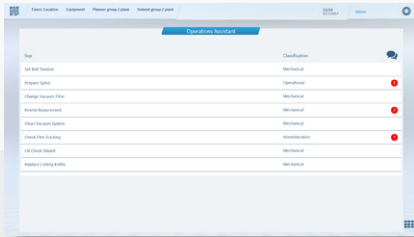
BOSCH
Invented for life

Standardized workflows with the Operations Assistant

Productivity and efficiency on a new level



Standardized operations and maintenance



Operations Assistant

The Operations Assistant¹ allows engineers and plant managers to create step-by-step descriptions, including text, images, and video clips for defined operation procedures, such as cleaning and format changes. These documents can be stored, shared and accessed by operators at any time for operation, troubleshooting or training purposes either on the HMI 4.0, Shopfloor Dashboard, PC, or mobile devices.

Application and Key Benefits

The tool of your choice to standardize operating and maintenance procedures with fast and digital access to existing step-by-step descriptions. The Operations Assistant gives all operators including new colleagues a single hub of expert information providing more uniform processes, less training effort, and increased performance as well as time and cost savings.

Customer Value

- ▶ Direct assistance on the machine
- ▶ Experience and knowledge sharing within the plant
- ▶ Standard operation procedures without paper
- ▶ User-friendly pictures and videos
- ▶ Continuous improvement by involving personnel
- ▶ Single hub of expert information

Combine with

- ▶ Maintenance Support System¹
- ▶ Maintenance Assistant¹
- ▶ Modernization
- ▶ Group Training
- ▶ On-the-job-training

1 Software: needs hardware for usage

2 Shopfloor application ("App")

**Robert Bosch
Packaging Technology GmbH**

Stuttgarter Straße 130, 71332 Waiblingen, Germany

i40.packaging@bosch.com | www.boschpackaging.com