

Embedded Engineer Program.

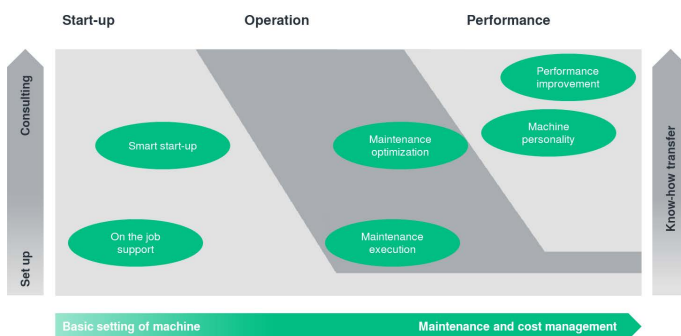
DEDICATED SUPPORT BY YOUR SIDE.

The Syntegon Technology's Embedded Engineer Program allows you to benefit from having a fulltime Syntegon service engineer based at your site.

There are six modules to the program, which are applicable to all Syntegon Technology equipments and can be combined flexibly to meet your specific business needs.

Depending on the level of know-how in your organization, the status of your machines, your objectives and maintenance strategy, you can shape this service to suit your requirements.

Solutions throughout the machine life cycle



Start-up: Are you buying a new machine?

We provide expertise and technical support to optimize the integration of your new machine into your existing production environment. We will provide your staff with the skills and know-how required to operate your new machine effectively.

Operation: Is your target to increase your machine uptime and optimize your maintenance?

We offer qualified technical support to outline and implement a maintenance plan which best suits your specific production requirements.

Performance: Is your target to improve production performance?

Our service specialists will be integrated in your continuous improvement team to support with both the coordination and implementation of actions to improve production performance.

Your benefits

- ❑ Flexible modules tailored to your requirements throughout the machine life cycle
- ❑ Immediate on-site response to issues
- ❑ Dedicated support from our Syntegon specialists
- ❑ Increased in-house competency base through observations and on-the-job training
- ❑ Production support for efficient operations in daily business



Design your Embedded Engineer Program.

Each module consists of a variety of field service activities, material support, on-the-job training, project management and coordination activities on site for you to choose from.



START-UP

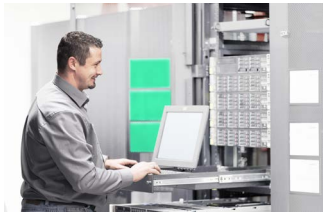
On-the-job support

Keep your machine uptime secure during start-up by utilizing our technical support. Our Syntegon specialists will support you and your operators to keep the machine as stable as during the site acceptance test (SAT).



Smart start-up

Achieve optimum integration of the equipment into your production environment, understand critical issues and transfer the line philosophy to your team. Our service specialists will train your operator and the whole maintenance team on the job.



OPERATION

Maintenance execution

Secure machine uptime by undertaking regular maintenance activities on-site; thereby reducing the cost of downtime and improving the reliability of your production. Our Syntegon service specialists will oversee troubleshooting, routine operations on the machines and also perform necessary stock monitoring.



Maintenance optimization

Regular maintenance activities as well as coordinated maintenance schedules to suit your operation will ensure that production runs smoothly. Our specialists will enable you to reduce costs through planned downtimes.



PERFORMANCE

Machine personality

We can analyze specific data as basis for continuous improvement projects to enable you to better understand your machine status. The methods used by our specialists are based on Syntegon's quality standards to provide an accurate analysis of your machines.



Performance improvement

We work as part of your team to implement continuous improvement actions, by providing technical advice and developing solutions in collaboration with your engineers and quality team. We can manage both the implementation and coordination of activities to increase your performance.

You will find your
local partner at:

WWW.SYNTEGON.COM/SERVICES

PA-PCS/MKT, PA-FCS/PRM, 03.2020, subject to alterations